

# Eastsign

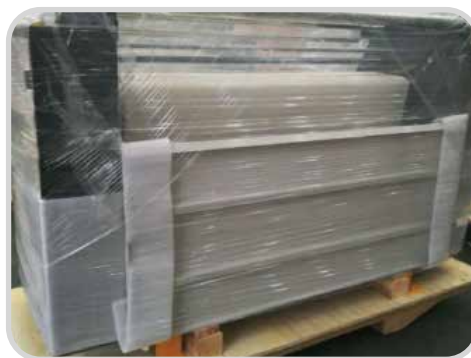
## Rotary Heat Press SOT

New packing solution



# Eastsign

## 1. Please unpack the Crate



## 2. Please take off the packing film and take out the working table

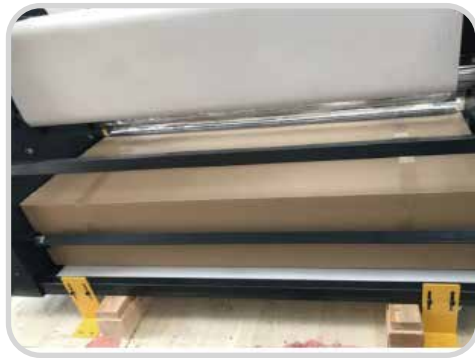


## 3. Please Loose the screws on the yellow bars and then remove the yellow bars on both sides.

No.	配件名称	Name of Parts	Quantity
1	涨力器	Tension Idler	1
2	导辊	Idler	3
3	布兜细辊	Fbric Unwind Shaft	3



4. Please check out the parts according to the parts list below



No.	配件名称	Name of Parts	Quantity
1	工作台的连接片	Connection piecof the table	1
2	工作台两边侧片	Side piece of the table	2
3	工作台侧片支架	Side Stand of the table	2
4	放卷轴	Unwind Shaft	1
5	收卷轴	Rewind Shaft	1
6	架固定拉杆	Tie Bar	1
7	放布兜轱	Fabric Unwind	1
8	配套加热管及固态	Heating Element	1
9	收卷涨紧器	Rewind Tension Assembly	1
10	放卷涨紧器	Unwind Tension Assembly	1
11	收卷罩壳	C hain Cover	1
12	松毛毯手柄	Hand crank for belt releasing	1
13	减速机及螺丝	Gear box & Screws	1
14	布兜	Cut piece Collection Assembly	1
15	调节脚	Levelling Feet	4
16	扳手	Wrench	1
17	电器说明书	Manual for Electronic Components	1